

SNOWDOG®

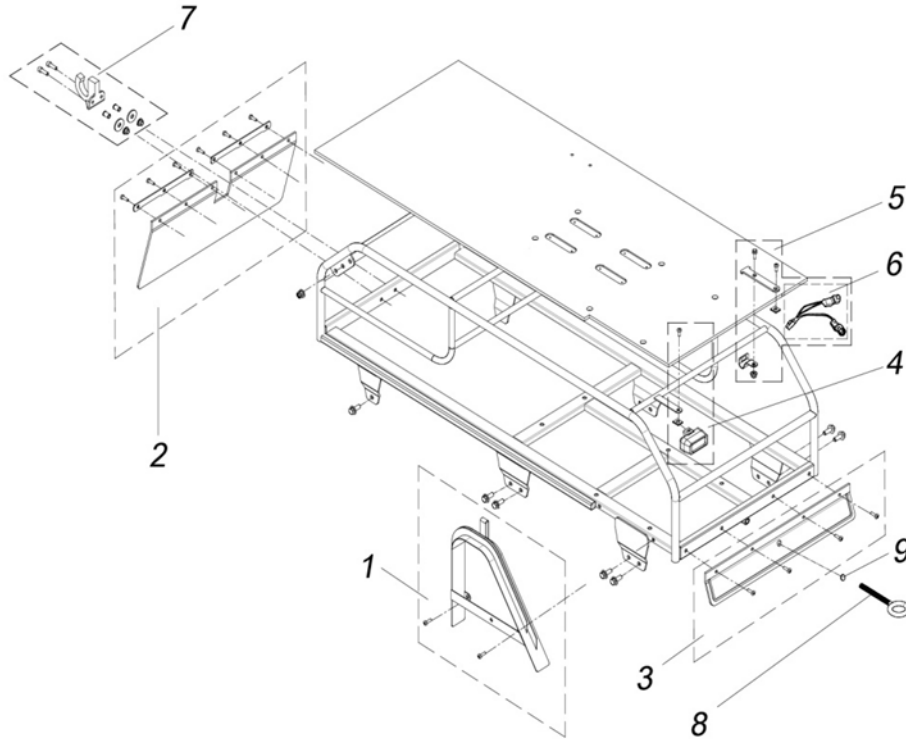
PARTS LIST

S-B13ME-WR VIN:
(SD500STANKB008531-008630)



Frame

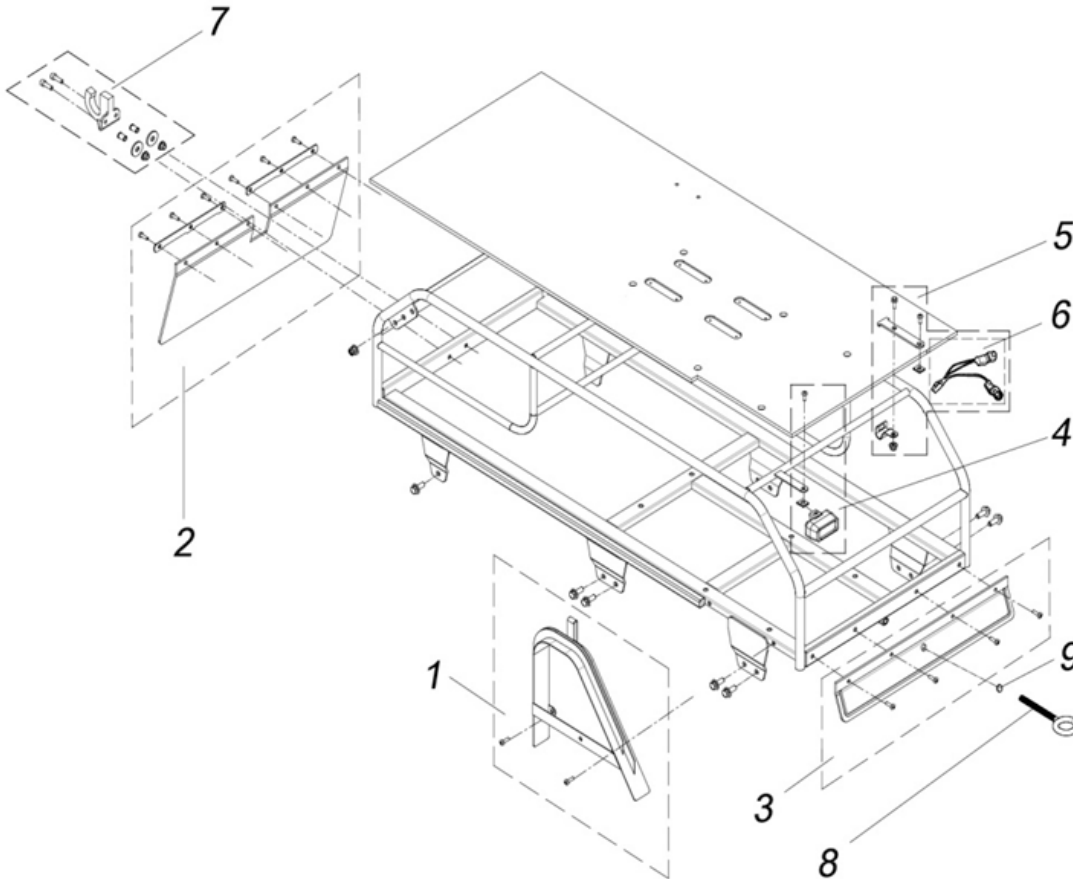
Schematics



#	Kit part number	Description	Amount per kit
1	4067-9901-0000	CHAIN PROTECTION KIT FOR BRIGGS AND STRATTON 13 ENGINES (2017)	
		chain protection	1
		screw M6×16	2
		rivet nut M6	
2	4177-9902-0000	REAR MUD FLAPS KIT 560MM. SHORT	
		mud flap	1
		screw M6×16	6
		metal plate	2
3	4060-0003-0000	FRONT MUD LAPS KIT 560MM	
		mud flap	1
		screw M6×16	6
4	4060-0031-0000	FRONT LIGHT (LED) KIT	
		front light	1
		screw M6×12	1
		M6 nut (clip)(green)	1

Frame

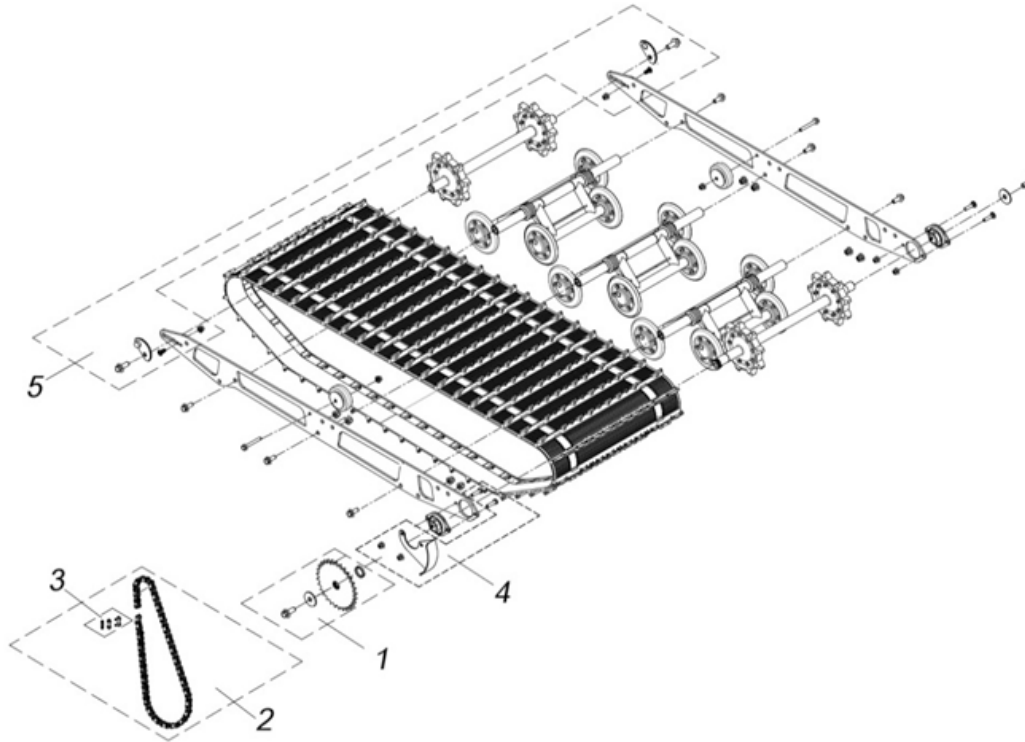
Schematics



#	Kit part number	Description	Amount per kit
5	4980-9900-0000 (SUBSTITUTE PART)	HEADLIGHT BRACKET KIT (2018)	
		bracket	1
		clamp	1
		screw M6×16	1
		nut M6	1
		headlight Y-connector	1
6	4980-4900-0001 (SUBSTITUTE PART)	HEADLIGHT Y-CONNECTOR	1
7	4060-0030-0000	TOW HITCH MOUNT KIT	
		tow hitch	1
		screw M8×40	2
		nut M8	2
		rivet nut M8	2
		washer 8×24	2
8	4060-0050-0000	FRONT EYEBOLT	1
9	4060-0051-0000	MUD FLAPS CAP	1

Chassis

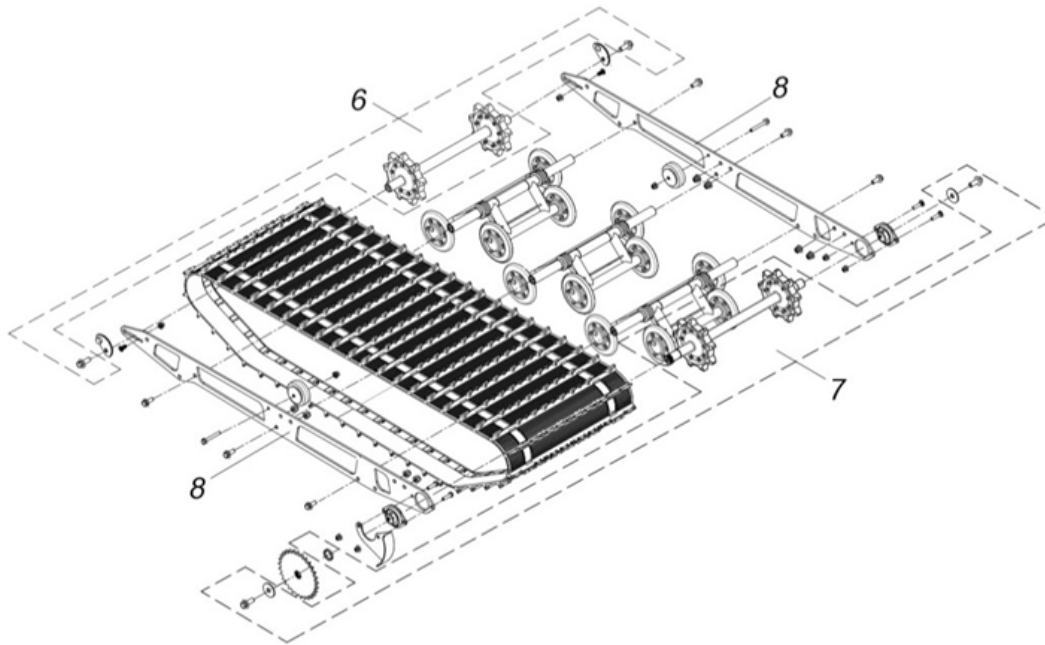
Schematics



#	Kit part number	Description	Amount per kit
1	4477-9900-0000	29 TEETH SPROCKET KIT	
		sprocket (29 teeth)	1
		screw M12×30	1
		washer 12×44	1
		bush 10 mm	1
	4060-0014-0000 (SUBSTITUTE PART)	32 TEETH SPROCKET KIT	
		sprocket (32 teeth)	1
		screw M12×30	1
		washer 12×44	1
		bush 10 mm	1
2	4470-9901-0000	STANDARD MODEL CHAIN (60 LINKS.WITHOUT LOCK)	1
	4460-0001-0000 (SUBSTITUTE PART)	STANDARD MODEL CHAIN KIT (62 LINKS WITH LOCK)	1
3	4470-0004-0000 (SUBSTITUTE PART)	CHAIN LOCK	1
4	4177-9900-0001 (SUBSTITUTE PART)	DRIVECHAIN SPROCKET GUARD RIGHT	
		guard	1
		screw M8×30	2
		nut M8	2
5	4060-0036-0000	ECCENTRIC PLATES KIT	
		right eccentric plate	1
		left eccentric plate	1
		screw M8×15-10×15	2
		nut M8	2
		screw M12×30	2

Chassis

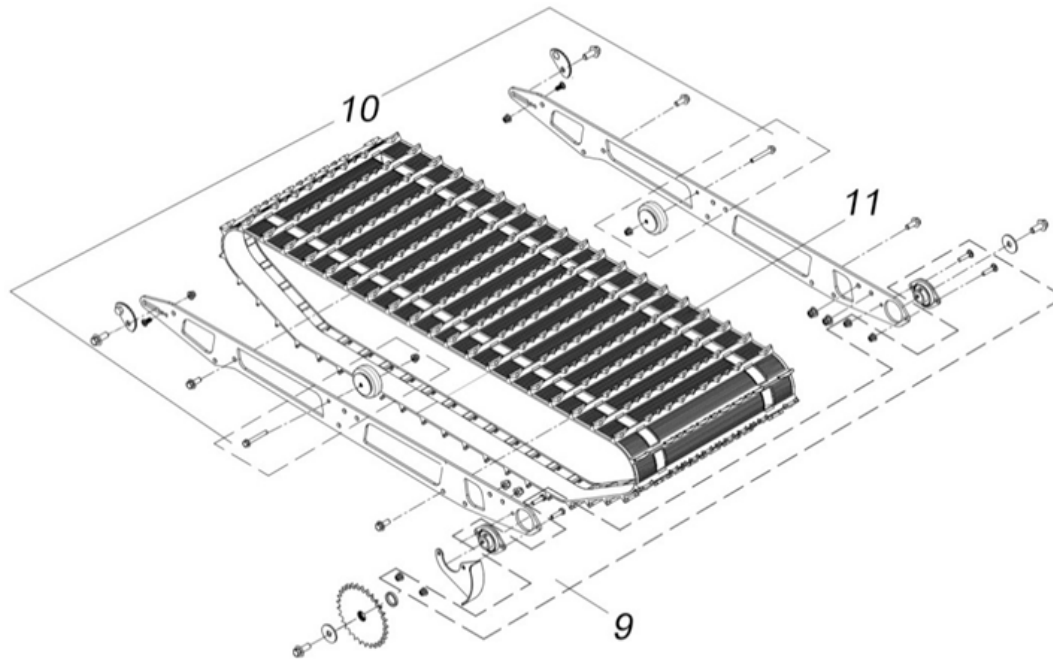
Schematics



#	Kit part number	Description	Amount per kit
6	4060-0007-0000 (ANALOG)	TRANSMISSION DRIVEN SHAFT KIT (FOR WR MODELS)	
		transmission driven shaft	1
		screw M12×30	2
	4588-9900-0000	TRANSMISSION DRIVEN SHAFT KIT (WITH SEALS. FOR WR MODELS)	
7		transmission driven shaft	1
		screw M12×30	2
	4060-0008-0000	TRANSMISSION DRIVER SHAFT KIT (FOR WR MODELS)	
		transmission driver shaf	1
		screw M12×30	2
8		washer 12×44	2
		bush 10 mm	1
	4567-2020-0290 (ANALOG. 2 MUST BE INSTALLED ON BOTH SIDES)	UNDERCARRIAGE PLATE (STANDARD W2)	1
	4577-2020-0290	UNDERCARRIAGE PLATE (STANDARD W3)	1

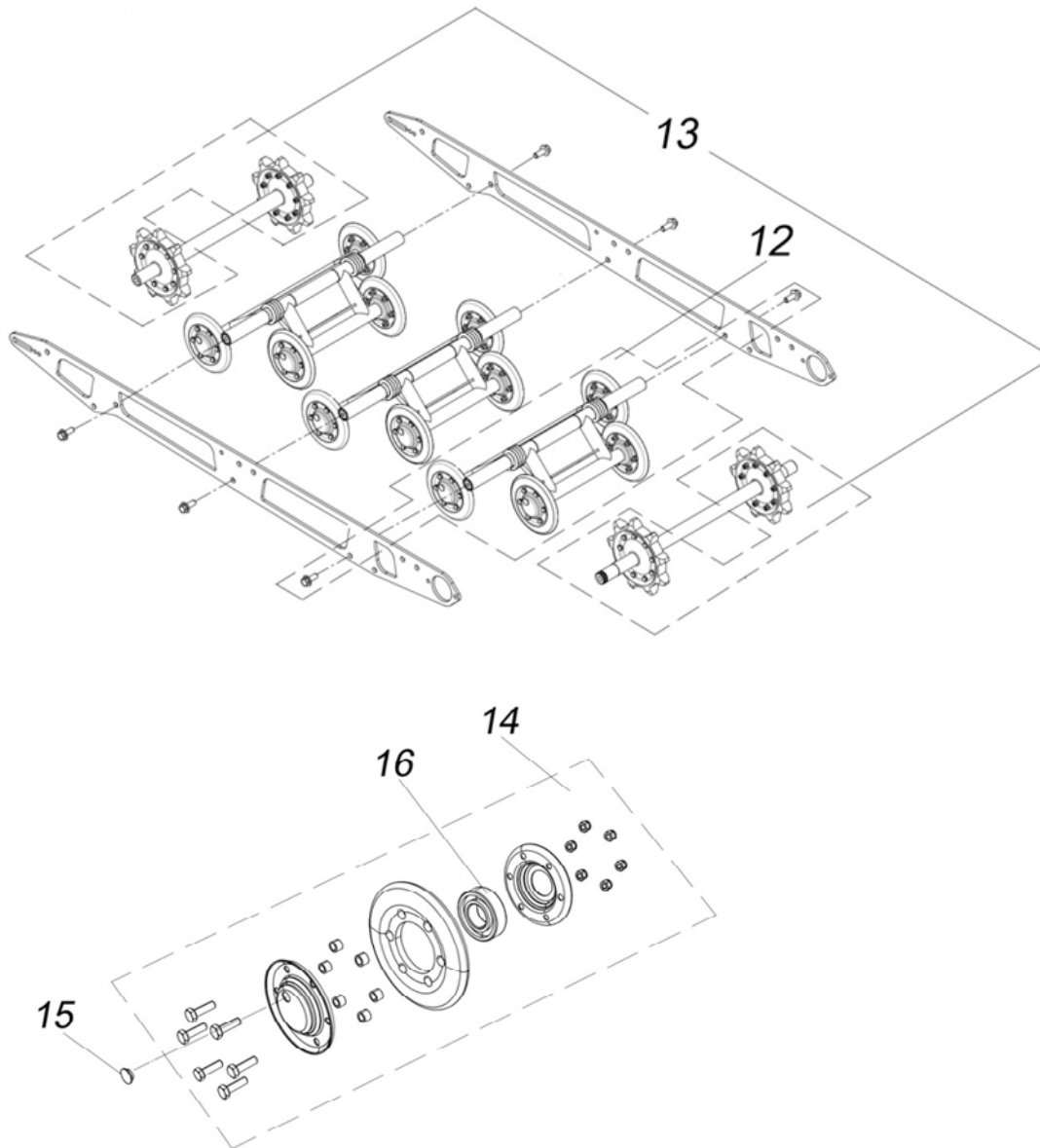
Chassis

Schematics



#	Kit part number	Description	Amount per kit
9	4060-0022-0000	BALL BEARING (WITH BODY PARTS) KIT	
		ball bearing	2
		screw M8×20	4
		nut M8	4
10	4060-0015-0000	SUPPORT TRACKS WHEELS KIT	
		wheel	2
		screw M8×60	2
		nut M8	2
11	4567-0001-0000	TRACK (FOR STANDARD)	1

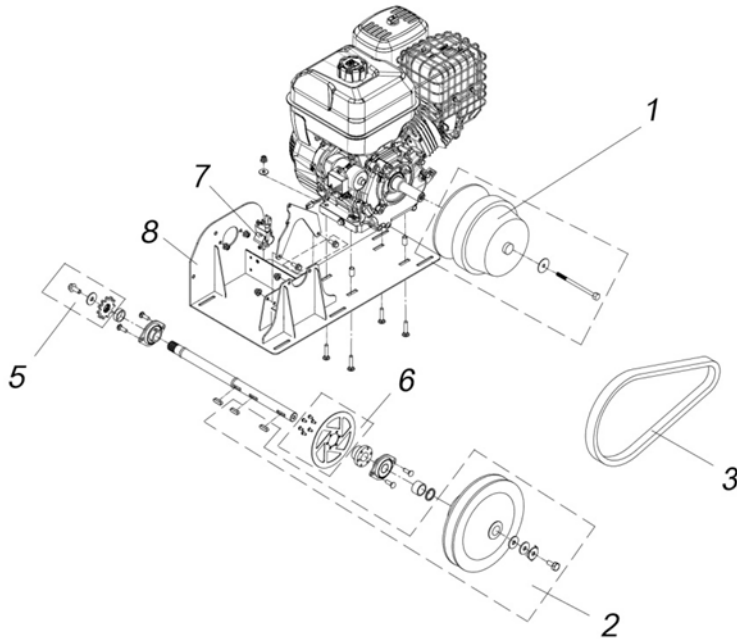
Chassis



#	Kit part number	Description	Amount per kit
12	4060-0029-0000 (ANALOG)	THREE SPRINGS TROLLEY KIT (488MM)	
		trolley 488 mm	1
		screw M10×30	2
	4487-9900-0000	TWO SPRINGS TROLLEY KIT (488MM W/SEALS)	
		trolley 488 mm	
		screw M10×30	
13	4573-9900-0000	PLASTIC SPROCKET KIT	
		sprocket	2
		screw M6×20	18
		nut M6	18
		bush	18
14	4577-9900-0000 (ANALOG)	TROLLEY WHEEL	
		screw M6×20	6
		bush	6
		nut M6	6
		tire	1
		cover inner	1
		outer cover	1
15	4470-9900-0001	CAPS FOR WHEELS KIT	
		cap	20
16	4588-9904-0000	TROLLEY WHEELS BEARING KIT	
		ball bearing	4

Transmission

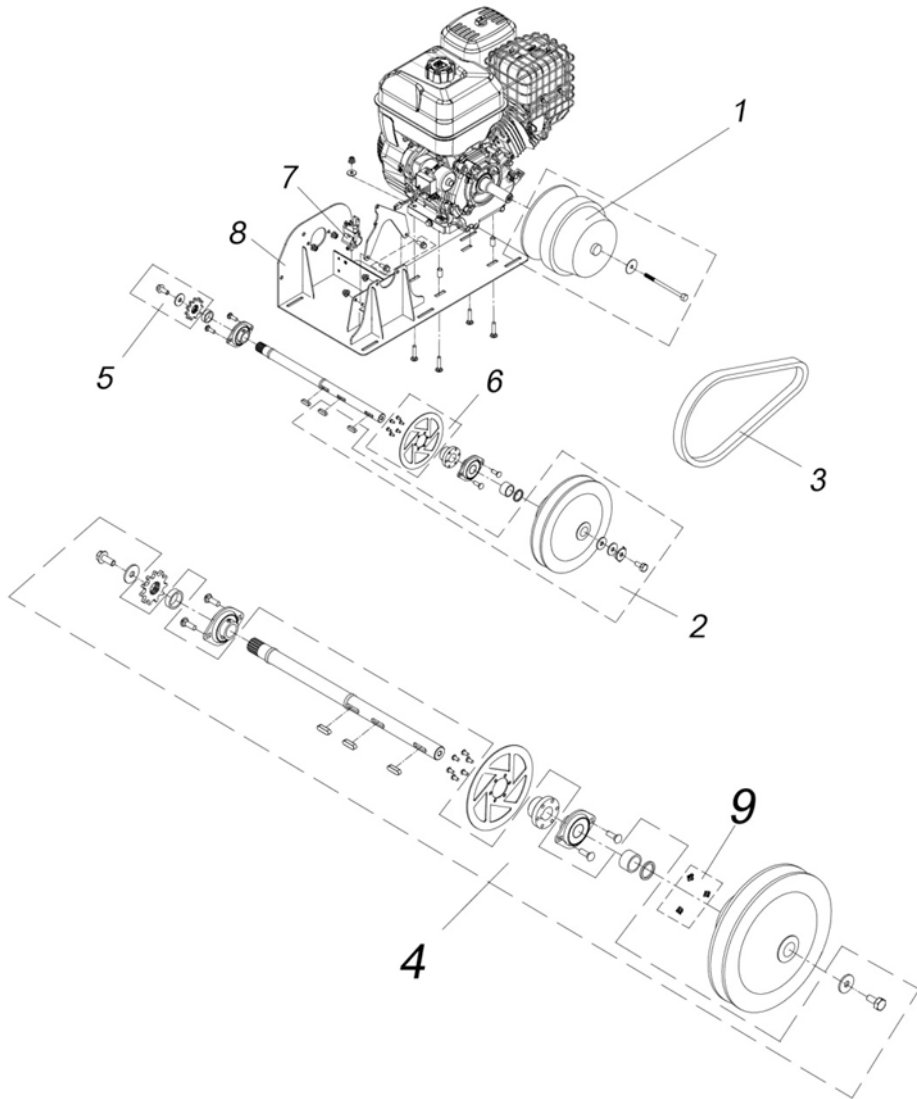
Schematics



#	Kit part number	Description	Amount per kit
1	4478-9900-0000	DRIVER PULLEY FOR BRIGGS AND STRATTON 13 ENGINES (SHAFT 25 MM)	
		driver pulley	1
		bolt M8×140	1
		washer 8×40×3	1
2	4060-0035-0000	DRIVEN PULLEY KIT FOR BRIGGS AND STRATTON 13 ENGINES	
		CVT instert	3
		fixed part of the driven pulley	1
		the mobile part of the driven pulley	1
		coupling	1
		washer 25×44×4	1
		adjusting washer 25×44×1	1
		spring	1
		screw M10×30	1
		washer 10×34	1
		key	2
3	4467-0127-0000	CVT 30×14×1120 BELT FOR BRIGGS AND STRATTON 13 ENGINES	1

Transmission

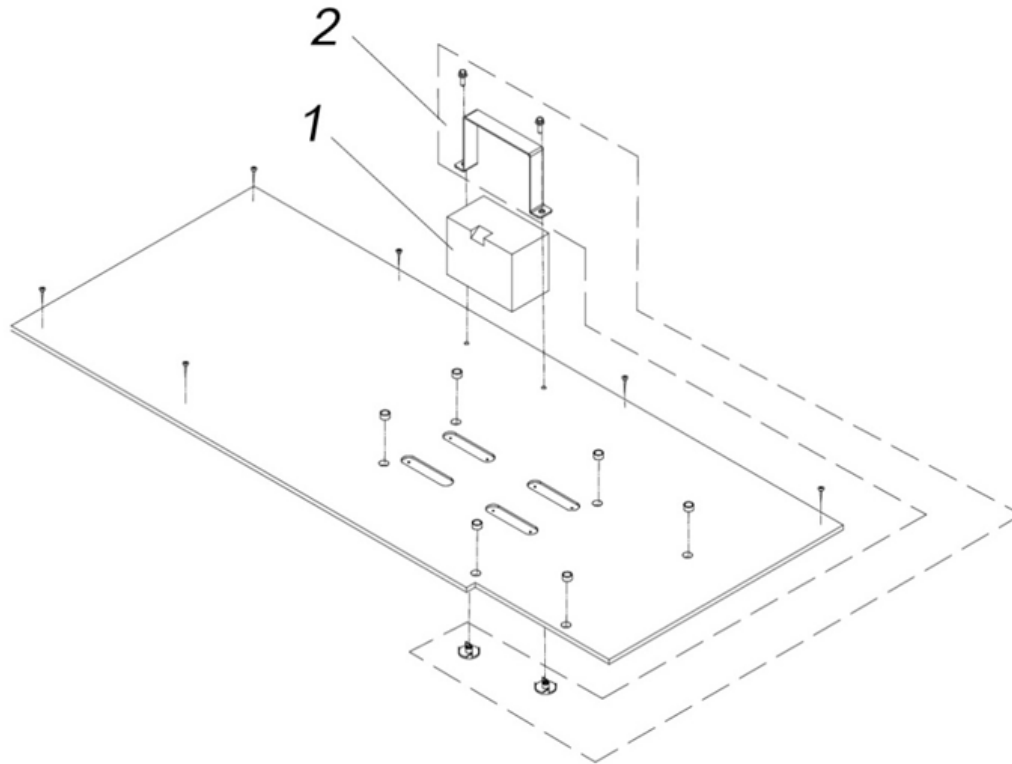
Schematics



#	Kit part number	Description	Amount per kit
4	4470-0003-0000	CVT SHAFT KIT (SAFARI WITHOUT REVERSE GEAR) (ENGINE SHAFT 25 MM)	1
		driven shaft CVT	1
		screw M10×30	2
		washer 10×34	2
		key	3
		bush 20 mm	1
		bush 3 mm	1
		bush 10 mm	1
		flange parking brake	1
		screw M5×8	6
		CVT instert	3
5	4060-0013-0000	TEETH SPROCKET KIT (11 TEETH)	
		sprocket (11 teeth)	1
		screw M10×30	1
6	4060-0011-0000	PARKING BRAKE DISC KIT	
		parking brake disc	1
		screw M5×8	6
7	4667-2021-0000	PARKING CALIPER ASSY	1
8	4477-0100-1100	ENGINE BRACKET (BS WR)	1
9	4060-0010-0000	SAFARI CVT INSTERTS SET (3 PCS)	
		CVT instert	3

Battery

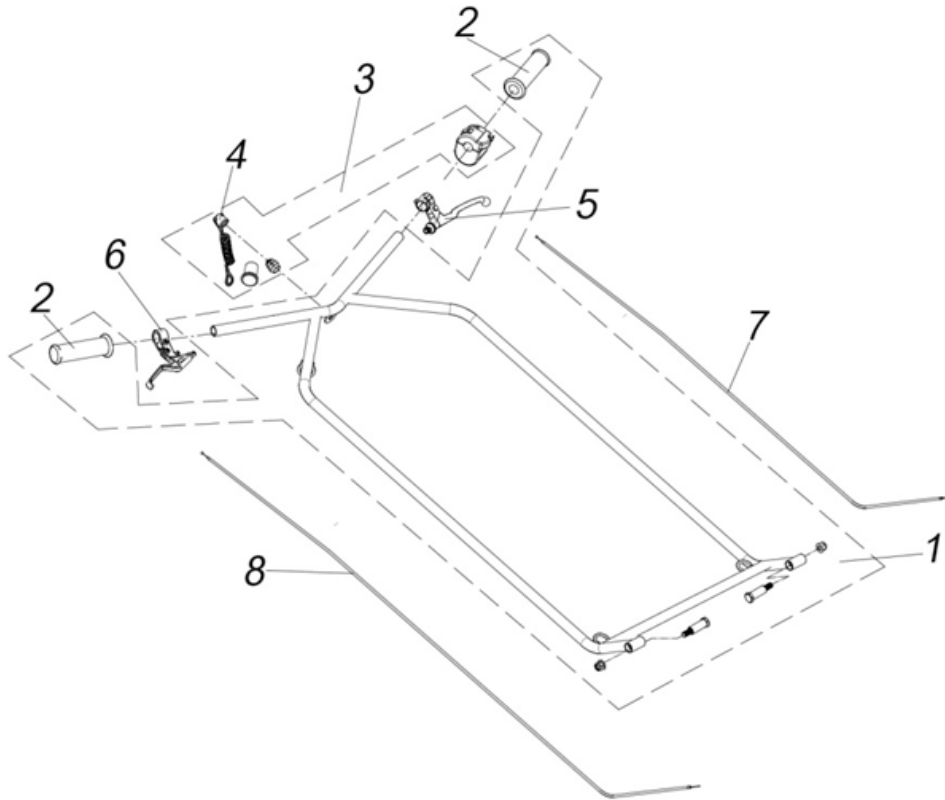
Schematics



#	Kit part number	Description	Amount per kit
1	4377-9900-0000	BATTERY 12V 11,2 AH	1
2	4387-9900-0000	BATTERY BRACKET KIT 2018	
		nut M6×12	2
		screw M6×16	2
		bracket	1

Handlebar

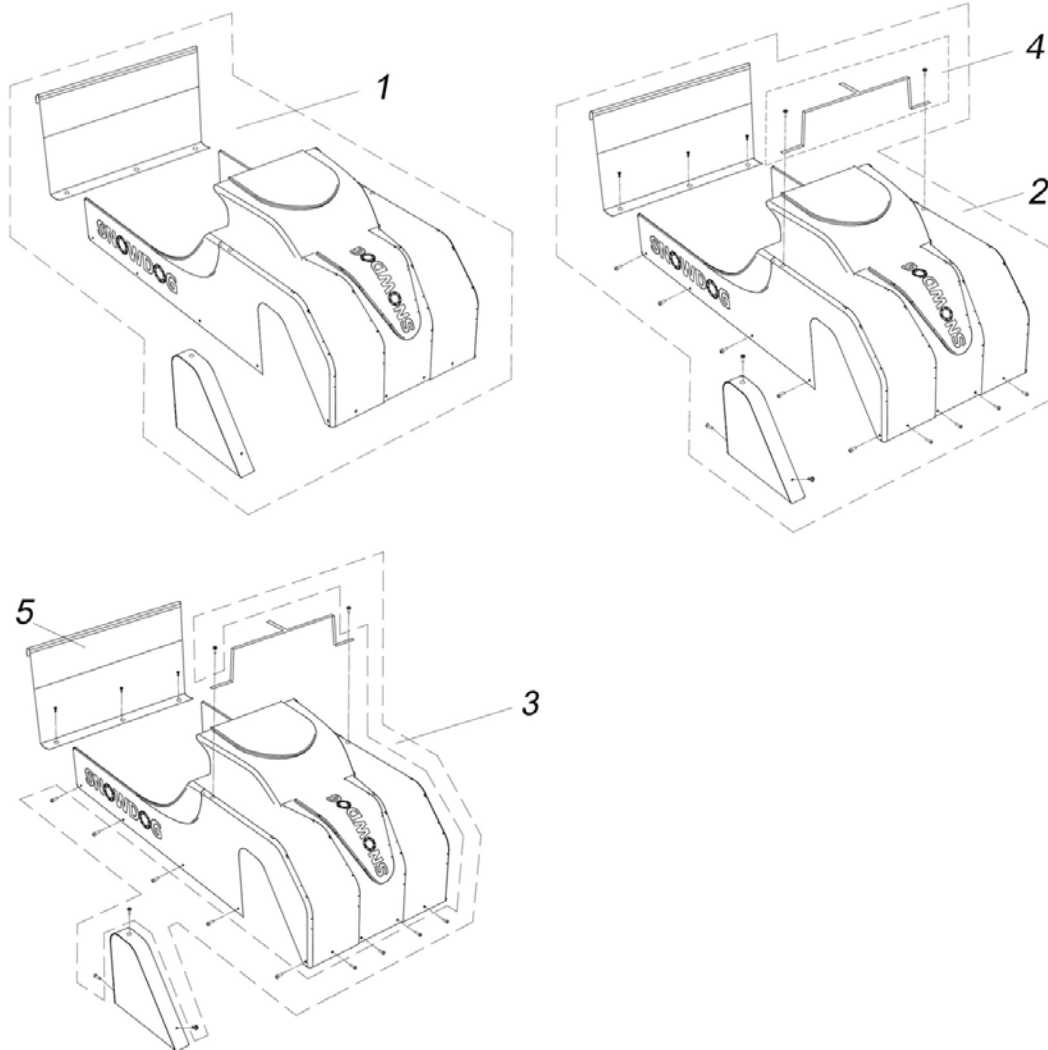
Schematics



#	Kit part number	Description	Amount per kit
1	4187-9903-0000	HANDLEBAR KIT (STANDARD WR 7)	
		handlebar	1
		handgrip	2
		screw M10×15-15×40	2
		nut M10×1.5	2
	4060-0026-0000 (ANALOG)	HANDLEBAR KIT (STANDARD WR AND WL)	
		handlebar	1
		handgrip	2
		screw M10×15-15×40	2
		nut M10×1.5	2
2	4060-0023-0000	HANDLEBAR HANDLES (2 PCS)	
		handgrip	2
3	4370-9901-0000	LEFT HANDLE SWITHC WITH HARNESS (WITH A BUTTON FOR ELECTRIC STARTER AND SOCKET DC. 3 POSITIONS)	1
4	8980-0100-0199	KILL SWITCH	1
5	4157-0017-0000 (ANALOG)	PARCKING LEVER WITH HOLDER (BRAKE LEVER)	1
	4677-0000-0006	PARCKING LEVER WITH HOLDER (SACCON)	1
6	4157-0016-0000 (ANALOG)	THREE FINGER LEVER WITH HOLDER (TROTTHLE LEVER)	1
	4677-0000-0005	TROTTHLE LEVER (SACCON)	1
7	4677-0000-0002	THROTTLE/BRAKE CABLE (2.5M)	1
8	4677-0000-0003	BRAKE CABLE (2,7M) (2018)	1

Cover

Schematics



#	Kit part number	Description	Amount per kit
1	4974-9900-0100	SNOWDOG STANDARD WR CASE COVER GREEN CAMO	1
	4966-9900-0100	SNOWDOG STANDARD WR COVER. WHITE	1
	4967-9900-0100	SNOWDOG STANDARD WR COVER. BLACK	1
2	4060-0045-0000	SNOWDOG STANDARD WR COVER KIT. WHITE	
		cover	1
		screw M6×20	8
		screw M6×16	12
		tapping screw M4.2×19	3
		bracket	1
	4060-0046-0000	SNOWDOG STANDARD WR COVER KIT. BLACK	
		cover	1
		screw M6×20	8
		screw M6×16	12
		tapping screw M4.2×19	3
		bracket	1
3	4060-0049-0100	COVER FASTNERS KIT	
		screw M6×20	5
		screw M6×16	5
4	4970-0002-0000	COVER SUPPORT BRACKET KIT	1
		bracket	1
		screw M6×20	2
5	4187-9900-0000	ZIPPER POUCH, BLACK	1